



* MANUFACTURED FROM A HIGH STRENGTH STAINLESS STEEL ALLOY
* DESIGNED TO MEET OR EXCEED OEM SPECIFICATIONS AND QUALITY.

APPLICATION	YEARS	STAINLESS STEEL INTAKE	SIZE (MM)	QTY NEEDED	STAINLESS STEEL EXHAUST	SIZE (MM)	QTY NEEDED	TOTAL QTY PER VEHICLE
HONDA								
CRF70F	2004-12	AU-09000I	23 X 5 X 65.8	1	AU-09000E	20 X 5 X 65.4	1	2
XR70R	1997-03'	AU-09000I	23 X 5 X 65.8	1	AU-09000E	20 X 5 X 65.4	1	2
XR400	2005, 07-08'	AU-09011I	33 X 5.5 X 102.7	2	AU-09011E	29 X 5.5 X 101.2	2	4
XR400R	1996-06'	AU-09011I	33 X 5.5 X 102.7	2	AU-09011E	29 X 5.5 X 101.2	2	4
XL600R/XR600R	1983-84	XU-09504I	36 X 6.6 X 105.7	2	XU-09504E	31 X 6.6 X 104.2	2	4
	1985-00	XU-09504I	36 X 6.6 X 105.7	2	XU-09504E	31 X 6.6 X 104.2	2	4
XR650L	1993-16	XU-09504I	36 X 6.6 X 105.7	2	XU-09504E	31 X 6.6 X 104.2	2	4
KAWASAKI								
KLR250	1985-05	AU-09022I	29 X 5.5 X 89.09	2	AU-09022E	24.7 X 5.5 X 87.16	2	4
KLX400R/SR	2003-05	AU-09025I	36X5X82.47	2	AU-09025E	29X5X81.32	2	4
SUZUKI								
DR350	1990-00	AU-09033I	30.6 X 5 X 93.05	2	AU-09033E	27X5X92.55	2	4
DR350S	1990-93	AU-09033I	30.6 X 5 X 93.05	2	AU-09033E	27X5X92.55	2	4
DR350SE	1994-99	AU-09033I	30.6 X 5 X 93.05	2	AU-09033E	27X5X92.55	2	4
DR-Z400	2000-06	AU-09025I	36X5X82.47	2	AU-09025E	29X5X81.32	2	4
DR-Z400E	2000-07	AU-09025I	36X5X82.47	2	AU-09025E	29X5X81.32	2	4
DR-Z400S	2000-14	AU-09025I	36X5X82.47	2	AU-09025E	29X5X81.32	2	4
DR650SE	1996-15	AU-09032I	33X5.5X88.66	2	AU-09032E	28X5.5X87.84	2	2

NOTE: XU-09500 SERIES ALSO WORKS ON THE HONDA CB125 1976-82 ASK FOR DETAILS.

NOTE: XU-09516 SERIES ALSO WORKS ON THE SUZUKI 400CC BURGMAN AND SKYWAVE. AS FOR DETAILS.

HI - PERFORMANCE RACING VALVES AND SPRINGS

PSYCHIC® INTAKE & EXHAUST VALVES:

- * FORGED, STAINLESS STEEL ONE PIECE CONSTRUCTION.
- *BLACK NITRIDE COATING ALLOWS A HIGHER RESISTANCE TO WEAR ALONG WITH REDUCING FRICTION FOR QUICKER AND HIGHER REVS.
- *FULLY SWIRL POLISHED & STELLITE TIPS MAKING THESE EXTREMELY LIGHT AND FAST FLOWING WITH STELLITE TIPS

INTAKE & EXHAUST SPRINGS:

- *MANUFACTURED FROM A HIGH STRENGTH OIL-TEMPERED STEEL ALLOY
- *HEAT TREATED TO INCREASE THE DURABILITY
- *MACHINED TO PRECISE SPECIFICATIONS
- *DESIGNED TO BE USED WITH STAINLESS STEEL CONVERSIONS (WHERE APPLICABLE)



APPLICATION	YEAR	DESCRIPTION	NI PART #
BETA			
RR 400 ENDURO	2005-09		
RR 450 ENDURO	2005-09	EXHAUST VALVE	XU-09548E
RR 525 ENDURO	2005-09		
		INTAKE VALVE	XU-09548I
GAS GAS			
EC250-F	2010-15	EXHAUST VALVE	XU-09519E
		EXHAUST SPRING	XU-09519ES
		CENTER INTAKE VALVE	XU-09519I
		INTAKE VALVE	XU-09522I
		INTAKE SPRING	XU-09519IS
EC450-F	2013-15	EXHAUST VALVE	XU-09521E
		EXHAUST /INTAKE SPRING	XU-09521S
		CENTER INTAKE VALVE	XU-09521I
		INTAKE VALVE	XU-09524I
		EXHAUST /INTAKE SPRING	XU-09521S
HONDA			
CRF110F	2013-16	EXHAUST VALVE	XU-09558E
		EXHAUST SPRING	XU-09558ES
		INTAKE VALVE	XU-09558I
		INTAKE SPRING	XU-09558IS
CRF125F	2014-17	EXHAUST VALVE	XU-09558E
		EXHAUST SPRING	XU-09558IS
		INTAKE VALVE	XU-09558I
		INTAKE SPRING	XU-09558IS
CRF150F	2003-05	EXHAUST VALVE	XU-09543E
		INTAKE VALVE	XU-09543I
	2006-17	EXHAUST VALVE	XU-09544E
		EXHAUST SPRING	XU-09544S
		INTAKE VALVE	XU-09544I
		INTAKE SPRING	XU-09544S
CRF150R/RB	2007-17	EXHAUST VALVE	XU-09545E
		EXHAUST SPRING	XU-09545ES
		INTAKE VALVE	XU-09545I
		INTAKE SPRING	XU-09545IS
CRF230F	2003-17	EXHAUST VALVE	XU-09543E
		INTAKE VALVE	XU-09543I
CRF230L	2008-09	EXHAUST VALVE	XU-09543E
		INTAKE VALVE	XU-09543I

HI - PERFORMANCE RACING VALVES AND SPRINGS

APPLICATION	YEAR	DESCRIPTION	NI PART #
HONDA			
CRF250R	2004-07	EXHAUST VALVE	XU-09502E
		EXHAUST SPRING	XU-09503ES
		INTAKE VALVE	XU-09526I
		INTAKE SPRING	XU-09526IS
	2008-09	EXHAUST VALVE	XU-09526E
		EXHAUST SPRING	XU-09526ES
		INTAKE VALVE	XU-09526I
		INTAKE SPRING	XU-09526IS
	2010-15	EXHAUST VALVE	XU-09532E
		EXHAUST SPRING	XU-09532ES
		INTAKE VALVE	XU-09532I
		INTAKE SPRING	XU-09532IS
2016-17	EXHAUST VALVE	XU-09532E	
	EXHAUST SPRING	XU-09532ES	
	INTAKE VALVE	XU-09532I	
	INTAKE SPRING	XU-09532-1IS	
CRF250X	2004-16	INTAKE VALVE	XU-09526I
		INTAKE SPRING	XU-09526IS
		EXHAUST VALVE	XU-09502E
		EXHAUST SPRING	XU-09503ES
CRF450R	2002-08	EXHAUST VALVE	XU-09534E
		EXHAUST SPRING	XU-09502ES
		EXHAUST VALVE	XU-09501E
		EXHAUST SPRING	XU-09502ES
	2009-12	EXHAUST VALVE	XU-09533E
		EXHAUST SPRING	XU-09533ES
		INTAKE VALVE	XU-09533I
		INTAKE SPRING	XU-09533IS
	2013-16	EXHAUST VALVE	XU-09546E
		EXHAUST SPRING	XU-09533ES
		INTAKE VALVE	XU-09533I
		INTAKE SPRING	XU-09533IS
CRF450X	2005-16	EXHAUST VALVE	XU-09503E*
		EXHAUST SPRING	XU-09537ES*
		INTAKE VALVE	XU-09503I*
		INTAKE SPRING	XU-09503IS*
HUSABERG			
FE250	2013	EXHAUST VALVE	XU-09550E
		EXHAUST SPRING	XU-09551ES
		INTAKE VALVE	XU-09550I
		INTAKE SPRING	XU-09551IS
FE 350	2013-14	EXHAUST VALVE	XU-09555E
		EXHAUST SPRING	XU-09555S
		INTAKE VALVE	XU-09555I
		INTAKE SPRING	XU-09555S
FE 450	2004-08	EXHAUST VALVE	XU-09548E
		INTAKE VALVE	XU-09548I

HI - PERFORMANCE RACING VALVES AND SPRINGS

APPLICATION	YEAR	DESCRIPTION	NI PART #	
HUSQVARNA				
FE 350	2014-16	EXHAUST VALVE	XU-09555E	
		EXHAUST SPRING	XU-09555S	
		INTAKE VALVE	XU-09555I	
		INTAKE SPRING	XU-09555S	
FC 350	2014-16	EXHAUST VALVE	XU-09555E	
		EXHAUST SPRING	XU-09556ES	
		INTAKE VALVE	XU-09555I	
		INTAKE SPRING	XU-09556IS	
KAWASAKI				
KX250F	2004-06	EXHAUST VALVE	XU-09509E	
		EXHAUST SPRING	XU-09509ES	
		INTAKE VALVE	XU-09509I	
		INTAKE SPRING	XU-09509IS	
	2007-08	EXHAUST VALVE	XU-09509E	
		EXHAUST SPRING	XU-09509ES	
	2007-08	INTAKE VALVE	XU-09552I	
		INTAKE SPRING	XU-09552IS	
	2009-10	EXHAUST VALVE	XU-09509E	
		EXHAUST SPRING	XU-09509ES	
	2009-10	INTAKE VALVE	XU-09515I	
		2004-06	INTAKE SPRING	XU-09540IS
	2011-16	EXHAUST VALVE	XU-09509E	
		EXHAUST SPRING	XU-09509ES	
2011-16	INTAKE VALVE	XU-09515I		
	INTAKE SPRING	XU-09539IS		
	KX450F	2006-08	EXHAUST VALVE	XU-09164E*
			EXHAUST SPRING	XU-09528ES*
INTAKE VALVE			XU-09164I*	
INTAKE SPRING			XU-09528IS*	
2009-15	EXHAUST VALVE	XU-09528E		
	EXHAUST SPRING	XU-09528ES		
	INTAKE VALVE	XU-09528I		
	INTAKE SPRING	XU-09528IS		
*ALSO FITS KFX450 2008-14				
KTM				
450 EXC	2003-07	EXHAUST VALVE	XU-09548E	
		EXHAUST SPRING	XU-09548S	
		INTAKE VALVE	XU-09548I	
		INTAKE SPRING	XU-09548S	
250SX-F	2005-07	EXHAUST VALVE	XU-09550E	
		EXHAUST SPRING	XU-09550ES	
		INTAKE VALVE	XU-09550I	
		INTAKE SPRING	XU-09550IS	
250SX-F	2008-12	EXHAUST VALVE	XU-09550E	
		EXHAUST SPRING	XU-09551ES	
		INTAKE VALVE	XU-09550I	
		INTAKE SPRING	XU-09551IS	
350 EXC-F	2012-16	EXHAUST VALVE	XU-09555E	
		EXHAUST SPRING	XU-09555S	
		INTAKE VALVE	XU-09555I	
		INTAKE SPRING	XU-09555S	
350 SX-F	2011-12	EXHAUST VALVE	XU-09555E	
		EXHAUST SPRING	XU-09557S	
		INTAKE VALVE	XU-09555I	
		INTAKE SPRING	XU-09557S	

HI - PERFORMANCE RACING VALVES AND SPRINGS

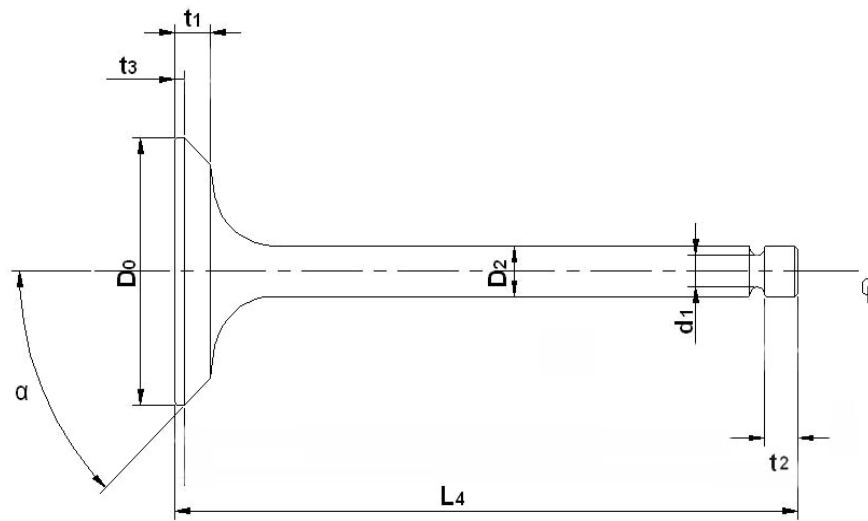
APPLICATION	YEAR	DESCRIPTION	NI PART #
KTM cont.			
350 SX-F	2013-15	EXHAUST VALVE	XU-09555E
		EXHAUST SPRING	XU-09556ES
		INTAKE VALVE	XU-09555I
		INTAKE SPRING	XU-09556IS
SUZUKI			
RM-Z250	2004-06	EXHAUST VALVE	XU-09509E
		EXHAUST SPRING	XU-09509ES
		INTAKE VALVE	XU-09509I
		INTAKE SPRING	XU-09509IS
	2007-09	EXHAUST VALVE	XU-09530E
		EXHAUST SPRING	XU-09509ES
		INTAKE VALVE	XU-09530I
	2010-15	INTAKE SPRING	XU-09509ES
		EXHAUST VALVE	XU-09530E
		EXHAUST SPRING	XU-09509ES
	2016-17	INTAKE VALVE	XU-09531I
		INTAKE SPRING	XU-09509ES
EXHAUST VALVE		XU-09530E	
EXHAUST SPRING		XU-09509ES	
RMX450	2010-11	INTAKE VALVE	XU-09531I
		INTAKE SPRING	XU-09509ES
		EXHAUST VALVE	XU-09527E
		EXHAUST SPRING	XU-09527ES
RM-Z450	2005-06	INTAKE VALVE	XU-09527I
		INTAKE SPRING	XU-09527IS
		EXHAUST VALVE	XU-09536E
		EXHAUST SPRING	XU-09536ES
	2007	INTAKE VALVE	XU-09536I
		INTAKE SPRING	XU-09536IS*
		EXHAUST VALVE	XU-09535E
		EXHAUST SPRING	XU-09536ES
	2008-17	INTAKE VALVE	XU-09535I
		INTAKE SPRING	XU-09536IS*
		EXHAUST VALVE	XU-09527E
		EXHAUST SPRING	XU-09527ES
2008-17	INTAKE VALVE	XU-09527I	
	INTAKE SPRING	XU-09527IS	
	INTAKE SPRING	XU-09527IS	
*ALSO FITS LT-R450 2006-09			
YAMAHA			
TW200	1987-17	EXHAUST VALVE	XU-09518E
		EXHAUST SPRING	AU-09518S-3
		INTAKE VALVE	XU-09518I
		INTAKE SPRING	AU-09518S-3
TT-R225	1999-04	EXHAUST VALVE	XU-09518E
		EXHAUST & INTAKE SPRING	AU-09518S-3
		INTAKE VALVE	XU-09518I
		EXHAUST & INTAKE SPRING	AU-09518S-3
XT225	1992-07	EXHAUST VALVE	XU-09518E
		EXHAUST SPRING	AU-09518S-3
		INTAKE VALVE	XU-09518I
		INTAKE SPRING	AU-09518S-3
XT250	2008-17	EXHAUST VALVE	XU-09518E
		EXHAUST SPRING	AU-09518S-3
		INTAKE VALVE	XU-09518I
		INTAKE SPRING	AU-09518S-3

HI - PERFORMANCE RACING VALVES AND SPRINGS

APPLICATION	YEAR	DESCRIPTION	NI PART #
YAMAHA cont.			
TT-R230	2005-16	EXHAUST VALVE	XU-09518E
		EXHAUST & INTAKE SPRING	AU-09518S-3
		INTAKE VALVE	XU-09518I
YZ250F	2001-13	EXHAUST & INTAKE SPRING	AU-09518S-3
		EXHAUST VALVE	XU-09519E
		EXHAUST SPRING	XU-09519ES
	2014-17	CENTER INTAKE VALVE	XU-09519I
		INTAKE VALVE	XU-09522I
		INTAKE SPRING	XU-09519IS
WR250F	2001-09	EXHAUST VALVE	XU-09553E
		EXHAUST SPRING	XU-09553ES
		INTAKE VALVE	XU-09553I
		INTAKE SPRING	XU-09553IS
		EXHAUST VALVE	XU-09519E
WR450F	2003-15	EXHAUST SPRING	XU-09519ES
		CENTER INTAKE VALVE	XU-09519I
		INTAKE VALVE	XU-09522I
		INTAKE SPRING	XU-09519IS
		EXHAUST VALVE	XU-09521E*
YZ450F	2003-09	EXHAUST /INTAKE SPRING	XU-09521S*
		CENTER INTAKE VALVE	XU-09521I*
		INTAKE VALVE	XU-09524I*
		EXHAUST /INTAKE SPRING	XU-09521S*
		EXHAUST VALVE	XU-09521E*
	2010-13	EXHAUST /INTAKE SPRING	XU-09521S*
		EXHAUST VALVE	XU-09541E
		EXHAUST SPRING	XU-09541ES
		INTAKE VALVE	XU-09541I
		INTAKE SPRING	XU-09541IS
2014-17	EXHAUST VALVE	XU-09554E	
	EXHAUST SPRING	XU-09541ES	
	INTAKE VALVE	XU-09554I	
	INTAKE SPRING	XU-09541IS	

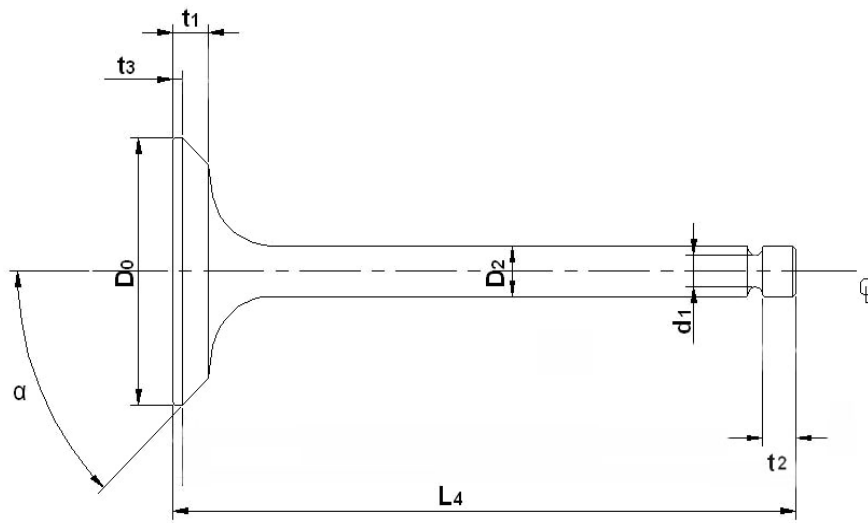
*ALSO FITS YFZ450 2004-08/2017 & YFZ450R/X 2009-17

INTAKE VALVE SPECIFICATIONS



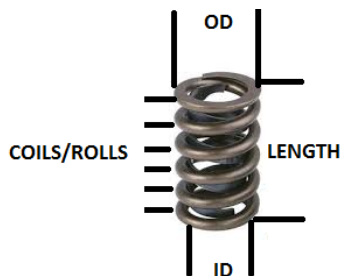
	D0	α	L4	D2	t3	t1	d1	t2
TOLERANCE (MM)	+/-0.10	----	+/-0.20	+/-0.01	+/-0.15	+/-0.20	+/-0.05	+/-0.10
N.I.#	VALVE HEAD DIAMETER (MM)	VALVE FACE ANGLE	VALVE LENGTH (MM)	VALVE STEM DIAMETER (MM)	VALVE HEAD MARGIN (MM)	HEAD MARGIN (MM)	VALVE GROOVE DEPTH (MM)	TIP LENGTH (MM)
XU-09500I	30mm	45°	92mm	5.5mm	1.1mm	2.7mm	4.55mm	6.0mm
XU-09502I	36mm	45°	84.6mm	5.46mm	1.5mm	2.9mm	4.7mm	1.5mm
XU-09503I	35mm	45°	84.6mm	5.5mm	1.0mm	2.7mm	4.75mm	1.5mm
XU-09504I	36mm	45°	105.7mm	6.6mm	1.0mm	3.3mm	5.5mm	5.7mm
XU-09509I	31mm	45°	79.0mm	4.47mm	1.0mm	2.5mm	3.8mm	1.5mm
XU-09515I	31mm	45°	79.3mm	4.47mm	1.0mm	2.5mm	3.75mm	1.5mm
XU-09518I	34mm	-	93.8mm	6.00mm	-	-	-	-
XU-09519I	23mm	45°	78.6mm	3.99mm	0.8mm	2.1mm	2.9mm	1.5mm
XU-09521I	27mm	45°	76.3mm	4.5mm	1.0mm	2.7mm	3.46mm	1.8mm
XU-09522I	23mm	45°	80.1mm	4.00mm	1.0mm	2.2mm	3.0mm	1.5mm
XU-09524I	27mm	45°	77.2mm	4.5mm	1.0mm	2.7mm	3.48mm	2.0mm
XU-09526I	31mm	45°	83.4mm	5.00mm	1.0mm	2.3mm	4.2mm	1.5mm
XU-09527I	36.0mm	45°	81.9mm	5.5mm	1.0mm	3.0mm	4.6mm	2.0mm
XU-09528I	36mm	45°	78.2mm	5.46mm	1.2mm	2.8mm	4.7mm	2.0mm
XU-09530I	31.0mm	45°	80.3mm	4.5mm	1.0mm	2.7mm	3.5mm	2.1mm
XU-09531I	31mm	45°	80.2mm	4.5mm	1.0mm	2.7mm	3.55mm	1.5mm
XU-09532I	30.45mm	45°	89.0mm	5.00mm	1.0mm	2.5mm	4.2mm	1.2mm
XU-09533I	36mm	45°	78.6mm	5.00mm	1.2mm	3.1mm	4.2mm	1.2mm
XU-09535I	36mm	45°	82.50mm	5.5mm	1.2mm	3.0mm	4.55mm	2.0mm
XU-09536I	36mm	45°	82.46mm	4.96mm	1.1mm	2.7mm	4.0mm	1.8mm
XU-09541I	35.98mm	45°	83.75mm	5.46mm	1.1mm	3mm	4.55mm	1.8mm
XU-09543I	31.46mm	45°	89.70mm	5.40mm	0.8mm	2.3mm	4.75mm	2.8mm
XU-09544I	29.95mm	45°	83.45mm	4.89mm	0.8mm	2.2mm	4.3mm	1.8mm
XU-09545I	25.95mm	45°	77.95mm	4.44mm	1.0mm	2.3mm	3.8mm	1.5mm
XU-09548I	35.01mm	45°	96.99mm	5.95	1.1mm	3.0mm	4.9mm	1.5mm
XU-09550I	30.9mm	45°	99.49mm	4.98mm	1.0mm	2.5mm	3.95mm	1.2mm
XU-09552I	30.97mm	45°	79.13mm	4.48mm	0.8mm	1.8mm	3.8mm	1.2mm
XU-09553I	31mm	45°	83.6mm	4.98mm	1.0mm	-	4.0mm	-
XU-09554I	37mm	45°	83.7mm	5.48mm	1.0mm	-	4.5mm	-
XU-09555I	36MM	45°	87.2mm	5.47mm	-	-	-	-
XU-09558I	25.5	45°	76.62mm	4.98mm	-	-	-	-
XU-09164I	35.95mm	45°	83.3mm	5.45mm	0.9mm	2.6mm	4.6mm	1.8mm

EXHAUST VALVE SPECIFICATIONS



	D0	α	L4	D2	t3	t1	d1	t2
TOLERANCE (MM)	+/-0.10	---	+/-0.20	+/-0.01	+/-0.15	+/-0.20	+/-0.05	+/-0.10
N.I.#	VALVE HEAD DIAMETER MM	VALVE FACE ANGLE	VALVE LENGTH MM	VALVE STEM DIAMETER MM	VALVE HEAD MARGIN MM	HEAD MARGIN MM	VALVE GROOVE DEPTH MM	TIP LENGTH MM
XU-09500E	25mm	45°	91.5mm	5.5mm	1.3mm	2.7mm	4.55mm	6.0mm
XU-09501E	30mm	45°	84.2mm	5mm	1.0mm	2.3mm	4.3mm	1.5mm
XU-09502E	26mm	45°	82.1mm	5mm	1.0mm	2.7mm	4.2mm	1.5mm
XU-09503E	30mm	45°	84.5mm	5mm	1.2mm	2.7mm	4.3mm	1.5mm
XU-09504E	31mm	45°	104.2mm	6.6mm	1.8mm	3.5mm	5.45mm	3.2mm
XU-09509E	25mm	45°	79.1mm	4.46mm	1.0mm	2.3mm	3.8mm	1.5mm
XU-09518E	28.47mm	-	92.5mm	5.92mm	-	-	-	-
XU-09519E	24.5mm	45°	77.9mm	4.5mm	1.0mm	2.1mm	3.5mm	2.1mm
XU-09521E	28mm	45°	75.0mm	5mm	1.0mm	2.8mm	4.1mm	1.8mm
XU-09526E	26mm	45°	82.2mm	4.5mm	1.0mm	2.5mm	3.8mm	1.5mm
XU-09527E	31mm	45°	80.8mm	5.5mm	1.0mm	3.0mm	4.6mm	2.0mm
XU-09528E	31mm	45°	77.0mm	5.45mm	1.2mm	3.0mm	4.65mm	2.0mm
XU-09530E	25mm	45°	80.6mm	4.5mm	1.0mm	2.3mm	3.55mm	2.1mm
XU-09532E	25mm	45°	84.1mm	4.5mm	1.0mm	2.3mm	3.8mm	1.2mm
XU-09533E	30mm	45°	80.5mm	5mm	1.2mm	2.5mm	4.2mm	1.2mm
XU-09534E	31mm	45°	84.3mm	5mm	1.0mm	2.7mm	4.2mm	1.5mm
XU-09535E	29mm	45°	81.3mm	5.5mm	1.2mm	2.3mm	4.55mm	2.0mm
XU-09536E	29mm	45°	81.3mm	5mm	1.1mm	2.7mm	4.0mm	1.8mm
XU-09541E	29.94mm	45°	85.98mm	5.46mm	1.2mm	2.8mm	4.6mm	1.8mm
XU-09543E	27.00mm	45°	89.25mm	5.4mm	1.3mm	3.0mm	4.75mm	2.6mm
XU-09544E	25.99mm	45°	82.6mm	4.94mm	1.0mm	2.5mm	4.3mm	1.8mm
XU-09545E	22.48mm	45°	79.95mm	4.47mm	0.8mm	2.2mm	3.8mm	1.0mm
XU-09546E	30.94mm	45°	80.54mm	4.95mm	1.0mm	2.7mm	4.3mm	1.4mm
XU-09548E	29.96mm	45°	96.92mm	5.95mm	1.2mm	2.8mm	5.0mm	1.5mm
XU-09550E	26.60mm	45°	92.90mm	4.97mm	1.1mm	2.5mm	3.9mm	1.4mm
XU-09553E	25mm	45°	82.4mm	4.47mm	0.8mm	-	3.5mm	-
XU-09554E	30.5mm	45°	85.8mm	5.465mm	0.8mm	-	4.5mm	-
XU-09555E	29mm	45°	89.25mm	5.46mm	-	-	-	-
XU-09558E	21mm	45°	76mm	4.95mm	-	-	-	-
XU-09164E	31.00mm	45°	82mm	5.45MM	1.0mm	2.6mm	4.6mm	1.8mm

SPRING SPECIFICATIONS



SPRING SPECS

NI#	POSITION	WIRE	OD	ID	LENGTH	COILS/ROLLS
XU-09502ES	-	3.6	23.5	16.5	41.5	7.0
XU-09502IS	-	3.6	23.7	16.5	38.5	6.4
XU-09503ES	-	3.3	20.0	13.0	42.8	9.0
XU-09503IS	-	2.0	16.0	12.0	36.5	7.0
XU-09505ES	-	2.4	17.9	13.0	45.5	10.0
XU-09509ES	-	3.0	20.0	14.0	38.5	7.0
XU-09509IS	-	3.0	20.2	14.2	39.0	7.3
XU-09519ES	-	2.5	18.0	13.0	35.3	7.0
XU-09519IS	-	2.3	15.7	11.0	34.5	7.6
XU-09521S	-	2.5	19.2	14.2	35.5	6.5
XU-09526ES	-	3.4	19.9	13.0	43.0	9.0
XU-09526IS	-	2.9	18.9	13.0	39.3	8.0
XU-09527ES	-	3.0	23.0	17.0	34.5	6.0
XU-09527IS	-	3.3	25.0	18.5	35.0	6.0
XU-09528ES	-	3.2	21.0	14.5	36.0	7.0
XU-09528IS	-	3.3	21.0	14.4	37.5	7.0
XU-09532ES	-	3.3	19.9	13.0	47.5	9.0
XU-09532IS	-	2.9	18.8	13.0	42.7	9.0
XU-09533ES	-	3.6	23.7	16.5	43.0	8.0
XU-09533IS	-	3.3	23.3	16.5	41.0	7.0
XU-09536ES	-	3.0	23.0	17.0	35.0	6.0
XU-09536IS	-	3.2	25.0	18.6	36.5	6.0
XU-09537ES	INNER	2.3	18.3	13.6	40.0	8.0
	OUTER	3.3	24.9	18.5	43.5	6.0
XU-09539IS	-	3.5	23.1	16.1	35.5	6.5
XU-09540IS	-	3.2	22.7	16.2	37.2	7.0
XU-09541ES	-	2.8	19.0	13.4	36.0	7.3
XU-09541IS	-	3.3	21.9	15.3	40.9	7.5
XU-09544S	-	3.3	21.2	14.6	37.9	7.5
XU-09545ES	-	3.3	19.0	12.6	44.5	9.3
XU-09545IS	-	3.0	18.6	12.6	38.5	8.5
XU-09548S	INNER	2.7	19.9	14.6	37.7	7.3
	OUTER	3.9	28.4	20.7	40.8	6.0
XU-09550ES INNER	INNER	3.6	21.8	14.7	40.0	6.0
XU-09550ES OUTER	OUTER	3.6	25.6	18.4	40.0	6.0
XU-09550IS INNER	INNER	3.6	21.8	14.7	40.0	6.0
XU-09550IS OUTER	OUTER	3.6	25.6	18.4	40.0	6.0
XU-09551ES	-	3.1	23.2	17.0	35.5	5.0
XU-09551IS	-	3.3	20.9	14.1	40.8	7.0
XU-09552IS	-	3.2	22.4	16.1	37.0	7.0
XU-09553ES	-	2.8	18.6	12.9	32.8	7.6
XU-09553IS	-	3.0	20.0	14.0	36.8	7.5
XU-09555S	-	3.2	20.5	14.0	39.7	7.0
XU-09556ES	-	COMING SOON	-	-	-	-
XU-09556IS	-	COMING SOON	-	-	-	-
XU-09557S	-	COMING SOON	-	-	-	-
XU-09558ES	-	COMING SOON	-	-	-	-
XU-09558IS	-	COMING SOON	-	-	-	-

VALVE SHIMS KITS

- 0.5MM INCREMENTS OF 1.20MM TO 3.50MM. SHIMS.
- MANUFACTURED FROM A COLD ROLLED STEEL ALLOY
- AVAILABLE IN COMPLETE KITS AND REPLACEMENT 3 PACKS



MX-09431
DIAMETER: 7.48MM
TOTAL 141PCS

NI#	THICKNESS
MX-09431-01	1.20MM
MX-09431-02	1.25MM
MX-09431-03	1.30MM
MX-09431-04	1.35MM
MX-09431-05	1.40MM
MX-09431-06	1.45MM
MX-09431-07	1.50MM
MX-09431-08	1.55MM
MX-09431-09	1.60MM
MX-09431-10	1.65MM
MX-09431-11	1.70MM
MX-09431-12	1.75MM
MX-09431-13	1.80MM
MX-09431-14	1.85MM
MX-09431-15	1.90MM
MX-09431-16	1.95MM
MX-09431-17	2.00MM
MX-09431-18	2.05MM
MX-09431-19	2.10MM
MX-09431-20	2.15MM
MX-09431-21	2.20MM
MX-09431-22	2.25MM
MX-09431-23	2.30MM
MX-09431-24	2.35MM
MX-09431-25	2.40MM
MX-09431-26	2.45MM
MX-09431-27	2.50MM
MX-09431-28	2.55MM
MX-09431-29	2.60MM
MX-09431-30	2.65MM
MX-09431-31	2.70MM
MX-09431-32	2.75MM
MX-09431-33	2.80MM
MX-09431-34	2.85MM
MX-09431-35	2.90MM
MX-09431-36	2.95MM
MX-09431-37	3.00MM
MX-09431-38	3.05MM
MX-09431-39	3.10MM
MX-09431-40	3.15MM
MX-09431-41	3.20MM
MX-09431-42	3.25MM
MX-09431-43	3.30MM
MX-09431-44	3.35MM
MX-09431-45	3.40MM
MX-09431-46	3.45MM
MX-09431-47	3.50MM

MX-09432
DIAMETER: 9.48MM
TOTAL 141PCS

NI#	THICKNESS
MX-09432-01	1.20MM
MX-09432-02	1.25MM
MX-09432-03	1.30MM
MX-09432-04	1.35MM
MX-09432-05	1.40MM
MX-09432-06	1.45MM
MX-09432-07	1.50MM
MX-09432-08	1.55MM
MX-09432-09	1.60MM
MX-09432-10	1.65MM
MX-09432-11	1.70MM
MX-09432-12	1.75MM
MX-09432-13	1.80MM
MX-09432-14	1.85MM
MX-09432-15	1.90MM
MX-09432-16	1.95MM
MX-09432-17	2.00MM
MX-09432-18	2.05MM
MX-09432-19	2.10MM
MX-09432-20	2.15MM
MX-09432-21	2.20MM
MX-09432-22	2.25MM
MX-09432-23	2.30MM
MX-09432-24	2.35MM
MX-09432-25	2.40MM
MX-09432-26	2.45MM
MX-09432-27	2.50MM
MX-09432-28	2.55MM
MX-09432-29	2.60MM
MX-09432-30	2.65MM
MX-09432-31	2.70MM
MX-09432-32	2.75MM
MX-09432-33	2.80MM
MX-09432-34	2.85MM
MX-09432-35	2.90MM
MX-09432-36	2.95MM
MX-09432-37	3.00MM
MX-09432-38	3.05MM
MX-09432-39	3.10MM
MX-09432-40	3.15MM
MX-09432-41	3.20MM
MX-09432-42	3.25MM
MX-09432-43	3.30MM
MX-09432-44	3.35MM
MX-09432-45	3.40MM
MX-09432-46	3.45MM
MX-09432-47	3.50MM

MX-09433
DIAMETER: 8.9MM, TOTAL 69 PCS

KTM	
NI#	THICKNESS
MX-09433-01	1.72MM
MX-09433-02	1.76MM
MX-09433-03	1.80MM
MX-09433-04	1.84MM
MX-09433-05	1.88MM
MX-09433-06	1.92MM
MX-09433-07	1.96MM
MX-09433-08	2.0MM
MX-09433-09	2.04MM
MX-09433-10	2.08MM
MX-09433-11	2.12MM
MX-09433-12	2.16MM
MX-09433-13	2.20MM
MX-09433-14	2.24MM
MX-09433-15	2.28MM
MX-09433-16	2.32MM
MX-09433-17	2.36MM
MX-09433-18	2.40MM
MX-09433-19	2.44MM
MX-09433-20	2.48MM
MX-09433-21	2.52MM
MX-09433-22	2.56MM
MX-09433-23	2.60MM