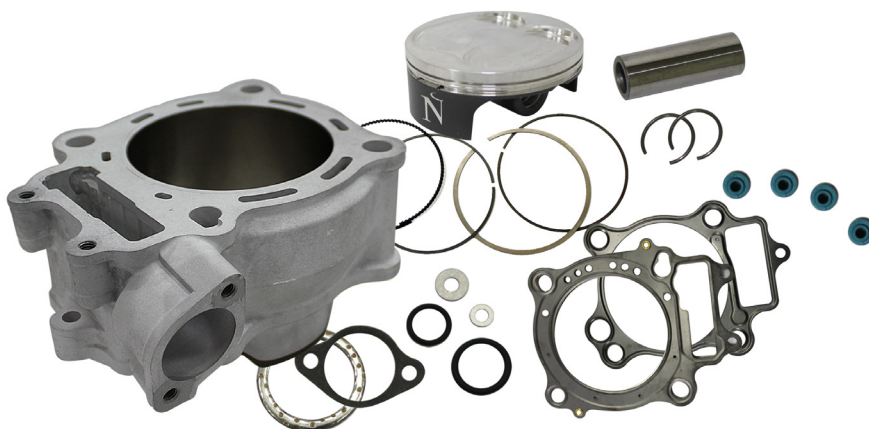


CYLINDERS & CYLINDER KITS

PSYCHIC® CYLINDERS AND CYLINDER KITS ARE AVAILABLE FROM STANDARD SIZE TO +4MM BIG BORES.

WHEN NEEDING TO REBUILD YOUR ENGINE OR SIMPLY WANTING TO INCREASE YOUR ENGINE'S PERFORMANCE & HORSEPOWER PSYCHIC® HAS THE ANSWER. CHOOSE THE CYLINDER ALONE OR A COMPLETE KIT WITH HAND MATCHED NAMURA PISTON AND TOP END GASKET KIT.

- **CYLINDERS** – BRAND NEW AND DESIGNED STRICTLY OFF OF OEM SPECIFICATIONS. CAST FROM AB4C ALUMINUM WITH NIKASIL PLATED SLEEVES. THIS ALLOWS OUR CYLINDERS TO HAVE SOME OF THE BEST WEAR CAPABILITIES IN THE MARKET. MOST CYLINDERS ARE SIMPLE DROP IN INSTALL WITH NO CASE MODIFICATIONS NECESSARY.
- **PISTONS** – FROM NAMURA TECHNOLOGIES THESE PISTONS COME WITH SOME OF THE MOST INNOVATIVE FEATURES OUT THERE INCLUDING MOS2 COATED SKITS, FOR EXCELLENT BREAK-IN QUALITIES AND REDUCED FRICTION, MACHINED SMOOTHED HEADS FOR BETTER FLOW RATES AND REDUCED CARBON BUILD UP, AND FINISHED WITH HARD ANODIZED PISTON DOMES FOR INCREASED DURABILITY. ALL PISTON KITS INCLUDE WRIST PIN, CIRCLIPS, AND OEM QUALITY RINGS.
- **GASKET KIT** – ALSO FROM NAMURA TECHNOLOGIES, TOP END GASKET KITS WILL OFFER ALL COMPONENTS NEEDED TO REBUILD YOUR TOP END. THIS INCLUDES: HEAD GASKET, BASE GASKET, EXHAUST GASKET, INTAKE/CARB GASKET, ALL ASSOCIATED O-RINGS AND VALVE STEM SEALS FOR YOUR 4 STROKE MODELS.



MX-09152 SERIES
MATERIAL: ALUMINUM
SLEEVE: NIKASIL

MODEL	YEAR	BORE	NOTES	CYLINDER ONLY NI#	CYLINDER KIT NI#
HONDA					
CRF250R	2004-09	78MM	STANDARD	MX-09152	MX-09152K*
CRF250X	2004-16				
CRF250R	2004-09	82MM	BIG BORE	MX-09152-2	N/A
CRF250X	2004-16				

*INCLUDES NAMURA NX-10030T TOP END GASKET SET & NX-10035 NAMURA HYPERDRIVE PISTON

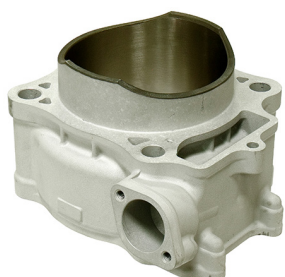


AT-09463 SERIES

MODEL	YEAR	BORE	NOTES	CYLINDER ONLY NI#	CYLINDER KIT NI#
HONDA					
XR400R	1996-04	89MM	BIG BORE	AT-09463	AT-09463K*

*INCLUDES NAMURA NA-10004T TOP END GASKET SET & NA-10004 NAMURA PISTON
*PACKAGED IN 4-PLAY BRAND
*AT-09463 SERIES ALSO FITS HONDA 1999-12 TRX400EX





MX-09158 SERIES

MODEL	YEAR	BORE	NOTES	CYLINDER ONLY NI#	CYLINDER KIT NI#
HONDA					
CRF450R	2002-06	96MM	STANDARD	MX-09158	MX-09158K*
		100MM	BIG BORE	MX-09158-1	N/A
CRF450R	2007-08				
CRM F450R	2007	96MM	STANDARD	MX-09158	MX-09149K
CRE F450R	2007				
CRF450R	2007-08	100MM	BIG BORE	MX-09158-1	N/A

*INCLUDES NAMURA NX-10045T TOP END GASKET SET & NX-10046 NAMURA HYPERDRIVE PISTON



MX-09171 & MX-09174 SERIES

MODEL	YEAR	BORE	NOTES	CYLINDER ONLY NI#	CYLINDER KIT NI#
HONDA					
CRF450R	2009-12	96MM	STANDARD	MX-09171	MX-09171K*
		100MM	BIG BORE	MX-09171-1	N/A
*INCLUDES					
CRF450R	2013-16	96MM	STANDARD	MX-09171	MX-09174K*
		100MM	BIG BORE	MX-09171-1	N/A

*INCLUDES NAMURA NX-10048T TOP END GASKET SET & NX-10048 NAMURA HYPERDRIVE PISTON



MX-09172 SERIES

MODEL	YEAR	BORE	NOTES	CYLINDER ONLY NI#	CYLINDER KIT NI#
HONDA					
CRF450X	2005-16	96MM	STANDARD	MX-09172	MX-09172K
		100MM	BIG BORE	MX-09172-1	N/A

*INCLUDES NAMURA NX-10046T TOP END GASKET SET & NX-10045 NAMURA HYPERDRIVE PISTON



MX-09554 SERIES

MODEL	YEAR	BORE	NOTES	CYLINDER ONLY NI#	CYLINDER KIT NI#
HONDA					
CRF250R	2010-17	76.8MM	STANDARD	MX-09554	MX-09554K
		80	BIG BORE	MX-09554-1	MX-09554-1K



AT-09462 SERIES

MODEL	YEAR	BORE	NOTES	CYLINDER ONLY NI#	CYLINDER KIT NI#
KAWASAKI					
KLX400	2003-05	90 MM	STANDARD	AT-09462	AT-09462K
		94 MM	BIG BORE	AT-09462-1	AT-09462-1K
SUZUKI					
DR-Z400K,E,S,SM	2000-15	90 MM	STANDARD	AT-09462	AT-09462K
		94 MM	BIG BORE	AT-09462-1	AT-09462-1K

*STD KIT INCLUDES NAMURA NA-30002T TOP END GASKET SET & NA-30002 NAMURA PISTON

*BB KIT INCLUDES NAMURA NA-30002-16T TOP END GASKET SET & NA-30002-16 NAMURA PISTON

AT-09462 ALSO FITS : ARCTIC CAT ATV 04-08 DVX 400, KAWASAKI ATV 03-06 KFX400
SUZUKI ATV 02-14 LTZ400



MX-09150 SERIES

MODEL	YEAR	BORE	NOTES	CYLINDER ONLY NI#	CYLINDER KIT NI#
-------	------	------	-------	-------------------	------------------

GAS GAS

EC 250R 4T	2010-15	77MM	STANDARD	MX-09150-2	MX-09150-2K*
		83MM	BIG BORE	MX-09150	N/A

*INCLUDES NAMURA NX-40032T TOP END GASKET SET & NX-40033 NAMURA HYPERDRIVE PISTON

YAMAHA	Column1	Column2	Column3	Column4	Column5
--------	---------	---------	---------	---------	---------

YZ250F	2001-04	77MM	STANDARD	MX-09150-2	N/A
WR250F		83MM	BIG BORE	MX-09150	N/A
YZ250F	2005-13	77MM	STANDARD	MX-09150-2	MX-09150-2K*
WR250F		83MM	BIG BORE	MX-09150	N/A

*INCLUDES NAMURA NX-40032T TOP END GASKET SET & NX-40033 NAMURA HYPERDRIVE PISTON



MX-09151 SERIES

MODEL	YEAR	BORE	NOTES	CYLINDER ONLY NI#	CYLINDER KIT NI#
-------	------	------	-------	-------------------	------------------

YAMAHA

WR450F	2003-06	95MM	STANDARD	MX-09151	MX-09151K*
YZ450F	2003-05	98MM	BIG BORE	MX-09151-1	MX-09151K*



MX-09159 SERIES

MODEL	YEAR	BORE	NOTES	CYLINDER ONLY NI#	CYLINDER KIT NI#
-------	------	------	-------	-------------------	------------------

YAMAHA

WR450F	2007-15	95MM	STANDARD	MX-09159	MX-09159K*
YZ450F	2006-09	98MM	BIG BORE	MX-09159-1	N/A

*INCLUDES NAMURA NX-40046T TOP END GASKET SET & NX-40045 NAMURA HYPERDRIVE PISTON

* MX-09159 SERIES ALSO FITS: YAMAHA ATV 2009-17 YFZ450R, 2017 YFZ450



MX-09173 SERIES

MODEL	YEAR	BORE	NOTES	CYLINDER ONLY NI#	CYLINDER KIT NI#
-------	------	------	-------	-------------------	------------------

YAMAHA

YZ450F	2014-17	97MM	STANDARD	MX-09173	MX-09173K*
YZ450FX	2016-18	97MM	STANDARD	MX-09173	N/A
WR450F	2016-18	97MM	STANDARD	MX-09173	N/A

*INCLUDES NAMURA NX-40048T TOP END GASKET SET & NX-40048 NAMURA HYPERDRIVE PISTON

OTHER CYLINDERS



MC-09170 SERIES
SLEEVE: NON-COATED

MODEL	YEAR	BORE	NOTES	CYLINDER ONLY NI#	CYLINDER KIT NI#
HONDA					
CG125KS/SE	1976-08	56.5MM	STANDARD	N/A	MC-09170



MX-09802A
SLEEVE: NON-COATED

MODEL	YEAR	BORE	NOTES	CYLINDER ONLY NI#	CYLINDER KIT NI#
SUZUKI					
DS125	1978-81	56 MM	STANDARD	MX-09802A	
TS125					



MX-09155 SERIES
SLEEVE: NIKASIL

MODEL	YEAR	BORE	NOTES	CYLINDER ONLY NI#	CYLINDER KIT NI#
YAMAHA					
WR125 R/X	2008-12	52MM	STANDARD	MX-09155	N/A
WR125 R/X	2008-12	63MM	BIG BORE	MX-09155-1	N/A

* MX-09155 SERIES ALSO FITS:
YAMAHA STREET YZF-R125, YZF-R150, FZ150i, RIEJU 125 2008-12



MX-09800 SERIES
SLEEVE: NON-COATED

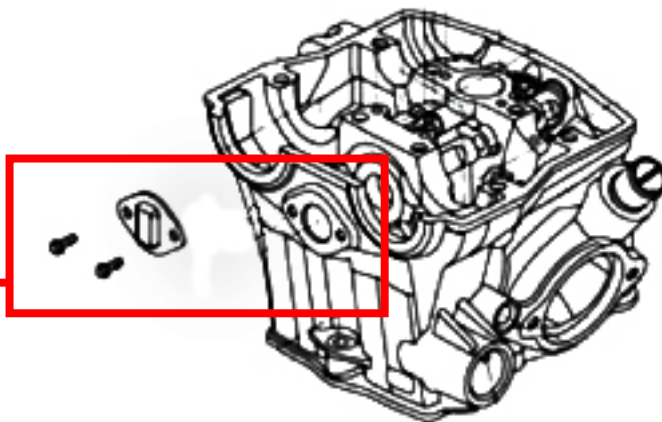
MODEL	YEAR	BORE	NOTES	CYLINDER ONLY NI#	CYLINDER KIT NI#
YAMAHA					
DT175	ALL	66MM	STANDARD	MX-09800A	MX-09800*

RETAINING PLATE



MX-09398OR
ANODIZED ALU 6061

CYLINDER HEAD



MODEL	YEAR
KTM	
450 SMR	2008-09
450 SMR	2012
450 SX-F	2007-12
450 SXS-F	2007-08
450 XC-F	2008-09
505 SX-F	2007-08
505 XC-F	2008-09